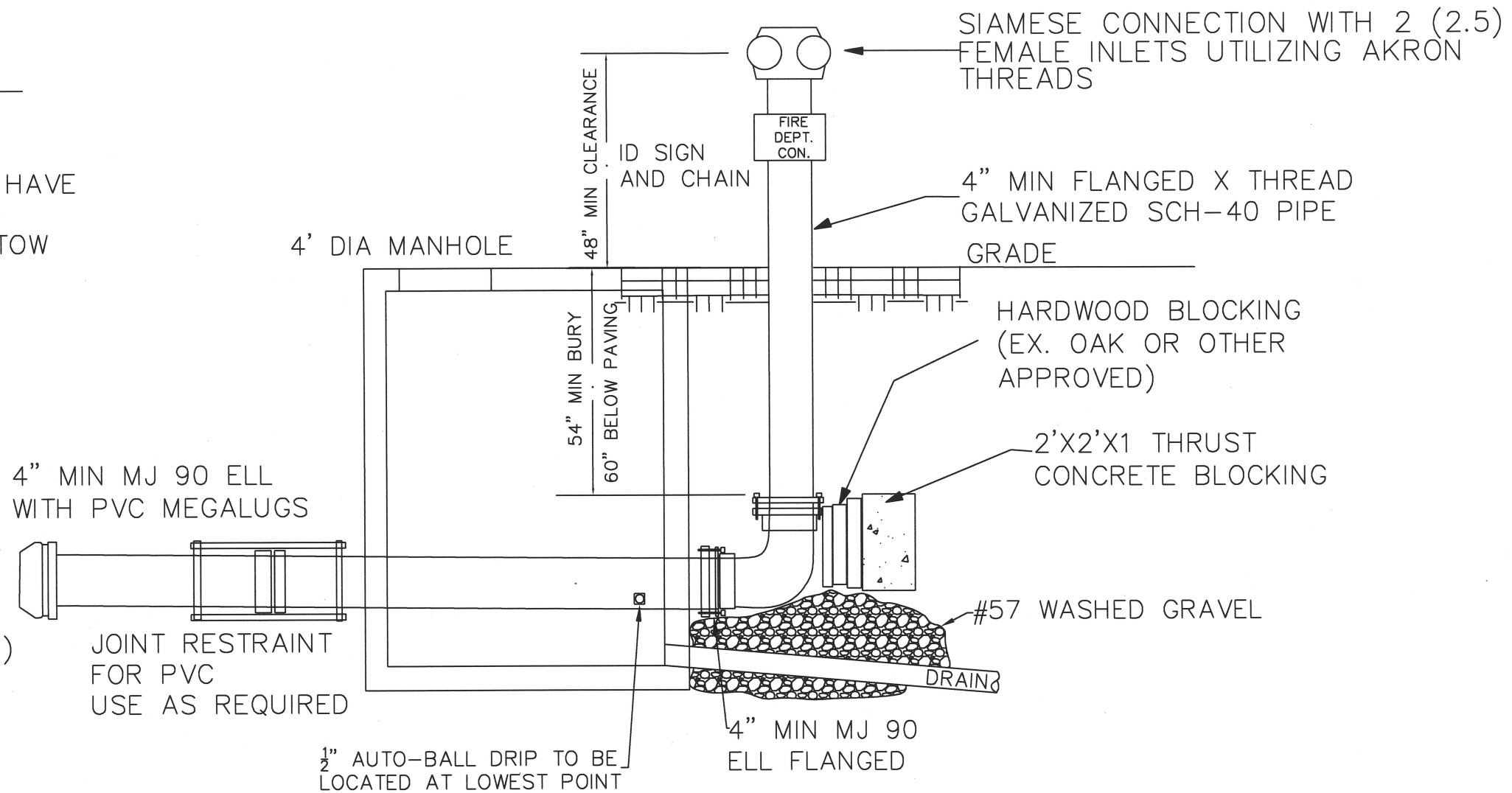


NOTE:


1. CHECK VALVE TO BE LOCATED IN BUILDING
2. ALL PIPING & VALVES HAVE TO BE LISTED UL, FM, OR APPROVED BY CITY OF STOW WATER ENGINEER



TYPICAL FIRE DEPARTMENT CONNECTION DETAIL

GALV. PIPE TO BE TAR-COATED BELOW GRADE

NOT TO SCALE

TYPICAL FIRE DEPARTMENT CONNECTION DETAIL 1	
CITY OF STOW WATER DEPARTMENT	
DRAWN BY: SJ	APPROVED BY:
DATE: SEP. 2023	
REVISED: JUN. 2026	
DRAWING NAME: FDC-1	JUNE 2026