



# SILVER SPRINGS DAY CAMP

## Camp Highlights:

- Sports, Craft, & Counselor Time
- Archery & Group Games
- Fishing, Cooking & Canoeing
- Court Games
- Weekly Field Trips



Join Us for a Summer Filled with Fun, Learning, and Exploration!

## Stow Parks & Recreation

3760 Darrow Rd., Stow, OH 44224  
330.689.5100 | parks@stow.oh.us

## Camp dates:

June 8 - August 7, 2026  
(no camp the week of June 29 - July 3)

**\$236** per week

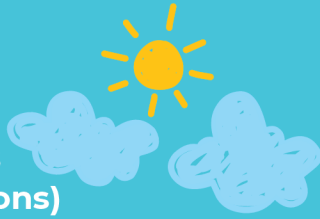
**\$40** AM/PM care per week

[StowOhio.gov/544](http://StowOhio.gov/544)

# SILVER SPRINGS DAY CAMP 2026

## Daily Schedule

9:00 am	Campers Arrive
9:05 am	Opening Ceremonies
9:20-11:20 am	Rotations (1 of 4 options) 1.) Sport, Craft, & Counselor Time 2.) Archery & Group Games 3.) Fishing, Cooking & Canoeing 4.) Court Games
11:45-12:30 pm	Lunch
12:30 pm	Travel to Swim (Mon., Wed., Thurs.)
1:00-3:00 pm	Swimming (Mon., Wed., Thurs.)
3:00 pm	Travel to Camp
3:30-4:00 pm	Snack & Camper of the Day
4:00 pm	Campers Leave



## Fun Activities Each Week!

Field trips listed are subject to change.

**WEEK 1: June 8 - 12**  
**THEME: Ready, Set, Glow!**  
**Field Trip: Glow Bowling**

**WEEK 2: June 15 - 19**  
**THEME: Up, Up Away!**  
**Field Trip: Urban Air**

**WEEK 3: June 22 - 26**  
**THEME: Scoops of Science**  
**Field Trip: Great Lakes Science Center**

**WEEK 4: July 6 - 10**  
**THEME: Despicable Designs**  
**Field Trip: Movie (Minions 3)**

**WEEK 5: July 13 - 17**  
**THEME: Paper and Paws**  
**Field Trip: Cleveland Zoo**

**WEEK 6: July 20 - 24**  
**THEME: Dirt and Dinosaurs**  
**Field Trip: Cleveland Children's Museum**

**WEEK 7: July 27 - 31**  
**THEME: Curtain Call Crafts**  
**Field Trip: Playhouse Square "The Lion King"**

**WEEK 8: August 3 - 7**  
**THEME: Go for the Gold!**  
**Special Day: Camp Olympics!**



## Camp dates:

June 8 - August 7, 2026  
(no camp the week of  
June 29 - July 3)

**\$236** per week

**\$40** AM/PM care  
per week

[StowOhio.gov/544](http://StowOhio.gov/544)

# SILVER SPRINGS DAY CAMP 2026

## PARENT HANDBOOK

### CAMPER ELIGIBILITY

Our Summer Camp welcomes children entering 1st through 6th grades for the 2026 camp season (June–August). Campers must be at least 6 years old at the start of camp and must remain within this age range throughout the season.

Campers are expected to independently manage personal care tasks, including:

- Using the restroom
- Changing clothes
- Eating lunch
- Communicating needs to staff



Campers must also be able to understand and follow directions from counselors. If your child requires accommodations, please contact the Parks & Recreation Department in advance so we can best support their camp experience.

### RESIDENCY REQUIREMENT

The resident rate is available exclusively to Stow residents. To qualify for the resident fee, at least one parent or legal guardian (excluding grandparents unless they are the child's legal guardian) must reside in Stow. Providing a false address to obtain the resident rate results in immediate unenrollment without a refund.

### SIGN IN/SIGN OUT

- All children must be signed in and out of camp every day.
- All drop-offs and pick-ups must be done with a Photo ID until staff recognizes you.
- \*\*There are No Exceptions to this rule!\*\***
- If the person is not on the pick-up authorization form, he/she will not be permitted to take that Child.

**\*\*No Exceptions!\*\***

- If you need to add someone to your Pick-Up Authorization form, you must do this in person. No phone calls will be accepted.

### WEATHER

Our camp is mainly outdoors. Heritage Barn does have air conditioning. Please dress your child for the weather!\* We have the option to use the indoor pool at Onyx Gyms, but that is not guaranteed. If it is raining, camp will be moved inside Heritage Barn!



### CAMP LOCATION

Drop-off and pick-up for Silver Springs Day Camp take place at **Heritage Barn, 5238 Young Road, Stow, OH 44224**. Heritage Barn serves as our camp's home base, and campers travel throughout the park for various activities during the day.

If you need to pick up your child early, please communicate with the Day Camp Directors in advance to arrange a designated meeting location. Please note that drop-off and pick-up at Life Center Plus are not permitted.

### CAMP TIMES

Camp: 9:00 AM - 4:00 PM

Before Camp\*: 7:05 AM - 9 AM

After Camp\*: 4 PM - 5:45 PM

\*Additional fees apply - \$40 per week



Camp begins at 9:00 am. We will be traveling by 9:15 am. Please make sure your child is at Heritage Barn by this time!

Camp ends at 4:00 pm. We understand that traffic can be problematic. Please give us a call if you are going to be late.

### BEFORE & AFTERCARE

Extended Care Weekly Rate: \$40.00 weekly

This supervised care is available for an additional fee of \$40.00 per week. (Includes both AM and PM Care).

We will watch movies, play games, color, play cards, play outside, etc.

\*Please DO NOT send electronics. We are not responsible for lost, stolen, or damaged items.\*

### WHAT TO

#### WEAR

- Tennis Shoes ONLY (No Sandals)
- Play Clothes
- Sunscreen - spray is preferred
- Campers can wear a swimsuit under clothes if they would like

#### BRING

- Bag for belongings
- Water Bottle
- Swim Suit \*can be worn under clothes
- Towel
- Sunscreen
- Sandals (optional)
- Lunch (no fridge)

# SILVER SPRINGS DAY CAMP 2026

## PARENT HANDBOOK

### CONTACT INFORMATION

Camp staff do not receive text messages to their phones. If you need immediate assistance, please call.

#### McKenzie Klingensmith

Day Camp Director

330-689-5160 \*texting not available\*



#### Ethan Nario-Redmond

Day Camp Assistant Director

330-689-5158 \*texting not available\*

#### Before & After Care

\*texting not available\*

#### Stow Parks and Recreation Department

3760 Darrow Rd., Stow, OH 44224

Phone: 330-689-5100

Parks@stowohio.gov

### TALK TO US!

#### REQUIRED!

This year we will use the app "Remind" to communicate with you. This will allow us to send reminders about field trips, special events, and camp alerts, etc.

To become a part of this group:

Send a text to 81010 and text this message:

@stowcamp26



### STAFF TO CAMPER RATIOS

All full-time counselors are assigned a group of approximately 6-7 campers per week to ensure appropriate supervision, engagement, and individualized attention. During core daytime programming, we maintain a staff-to-camper ratio of 1:6 or 1:7. This ratio allows counselors to effectively manage activities, prioritize safety, and provide meaningful support.

For Before Care and After Care, daily attendance may range from 1 to 30 campers. These extended care periods are staffed by 3-4 counselors to ensure adequate supervision and a safe, smooth transition at the beginning and end of each camp day.



### LOST AND FOUND

To help minimize lost items, please label all camper belongings clearly with your child's first and last name, including towels, clothing, water bottles, sunscreen, and goggles.

A Lost and Found table is located near the check-in area. Families are encouraged to check the table weekly at drop-off or pick-up for any misplaced items. Unlabeled items are difficult to return, and unclaimed belongings may be donated or discarded at the end of the camp season.



#### Camp dates:

June 8 - August 7, 2026  
(no camp the week of  
June 29 - July 3)

# SILVER SPRINGS DAY CAMP 2026

## PARENT HANDBOOK

### FIELD TRIPS

Field trips are included in your weekly cost.

Field trip forms will be sent home at the beginning of each week.

We travel as a camp. Your child is not required to go on field trips, however, there will be no counselors to stay behind, therefore, your child will need to stay home. Field trip shirts will be given out to each camper and should be worn for all field trips.



**Camp dates:**  
June 8 - August 7, 2026  
(no camp the week of  
June 29 - July 3)

### ONYX GYMS POOL

ABSOLUTELY NO PICK UP OR DROP OFF AT THE POOL

- We swim from 1:00-3:00pm on Mon., Wed., Thurs.
- All campers must change prior to going to the pool.
- There will be a swim test every Monday. Campers must pass the swim test in order to enter the big pool and go down the slides.

Orange Band: Stay in small pool - No slides

Green Band: Can go in any pool - Can go down slides



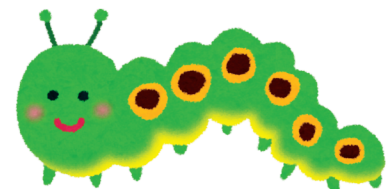
### SWIM TEST

Campers have the opportunity to take the swim test each Monday during camp. Participation is optional; however, the results determine access to certain pool areas.

Campers who pass the swim test may use both the shallow and deep pools, as well as the water slides, for the remainder of the current summer camp season. Once a camper passes the swim test for that summer, they do not need to retake it again during the same season.

Campers who choose not to take the swim test, or who do not pass, are limited to the shallow pool only until they successfully pass. They may not access the deep pool or use the water slides.

The swim test must be retaken each summer; passing in a previous year does not carry over to future camp seasons. Goggles without nose pieces are permitted, and campers must fully submerge their head underwater during the test.



# SILVER SPRINGS DAY CAMP 2026

## PARENT HANDBOOK

### ILLNESS

You will be notified immediately via phone call if your camper is feeling ill. Due to a large concentration of campers and staff members, there may be circumstances in which your child will be asked to be picked up from camp or stay home for 24-72 hours. Examples would be: Vomiting, diarrhea, pink eye, fever, Covid-19 symptoms, etc.



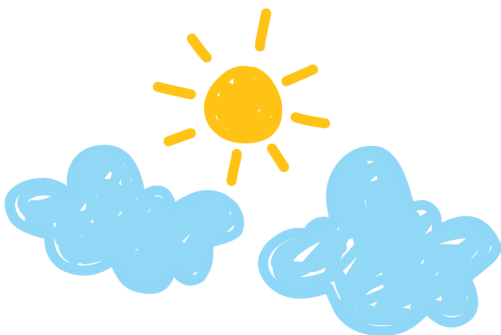
### INJURIES AND EMERGENCIES

The safety of our campers is our top priority. In the event of a minor injury, camp staff provide basic first aid and document the incident. Parents/guardians are notified at pick-up or sooner if the situation requires immediate communication.

In the case of a serious injury or medical emergency, emergency services are contacted immediately, and parents/guardians are notified as soon as possible. All incidents are handled in accordance with established camp safety procedures.

### MEDICATION ADMINISTRATION

If medication must be administered during camp hours, parents/guardians are required to complete a medical authorization form in advance. Medication is not administered without proper written authorization. The camp does not provide or administer over-the-counter medications to campers.



### BEHAVIORAL POLICY

ALL PARTICIPANTS WILL BE REQUIRED TO SIGN A CODE OF CONDUCT.

We advocate a positive guidance and discipline policy with an emphasis on positive reinforcement, redirection, prevention, and the development of self-discipline. Camp rules are established for safety and to ensure that we have a common standard of behavior.

#### VIOLETIONS OF EXPECTED BEHAVIOR

The staff and administration of the City of Stow Parks and Recreation Department will assess, evaluate, and determine the severity of infractions with regard to expected behavior.

Corrective Process

- Step 1: Redirect
- Step 2: Give a verbal warning
- Step 3: Issue a required break
- Step 4: Conference with the Camp Director / Assistant Director
- Step 5: Removal for the day

The following behaviors, if exhibited, and after evaluation and documentation, are deemed to be cause for permanent removal from camp:

- Bullying – There is zero tolerance for bullying or physical harm
- Inappropriate touching
- Causing physical harm

POSITIVE  
VIBES

### CHILD ABUSE REPORTING

Silver Springs Day Camp staff members are mandated reporters. If a staff member suspects that a child is being neglected or abused, or if a child discloses information regarding neglect or abuse, the staff member is required to report the concern to the Parks and Recreation Supervisor and/or the Parks and Recreation Director in accordance with mandated reporting laws and procedures.