

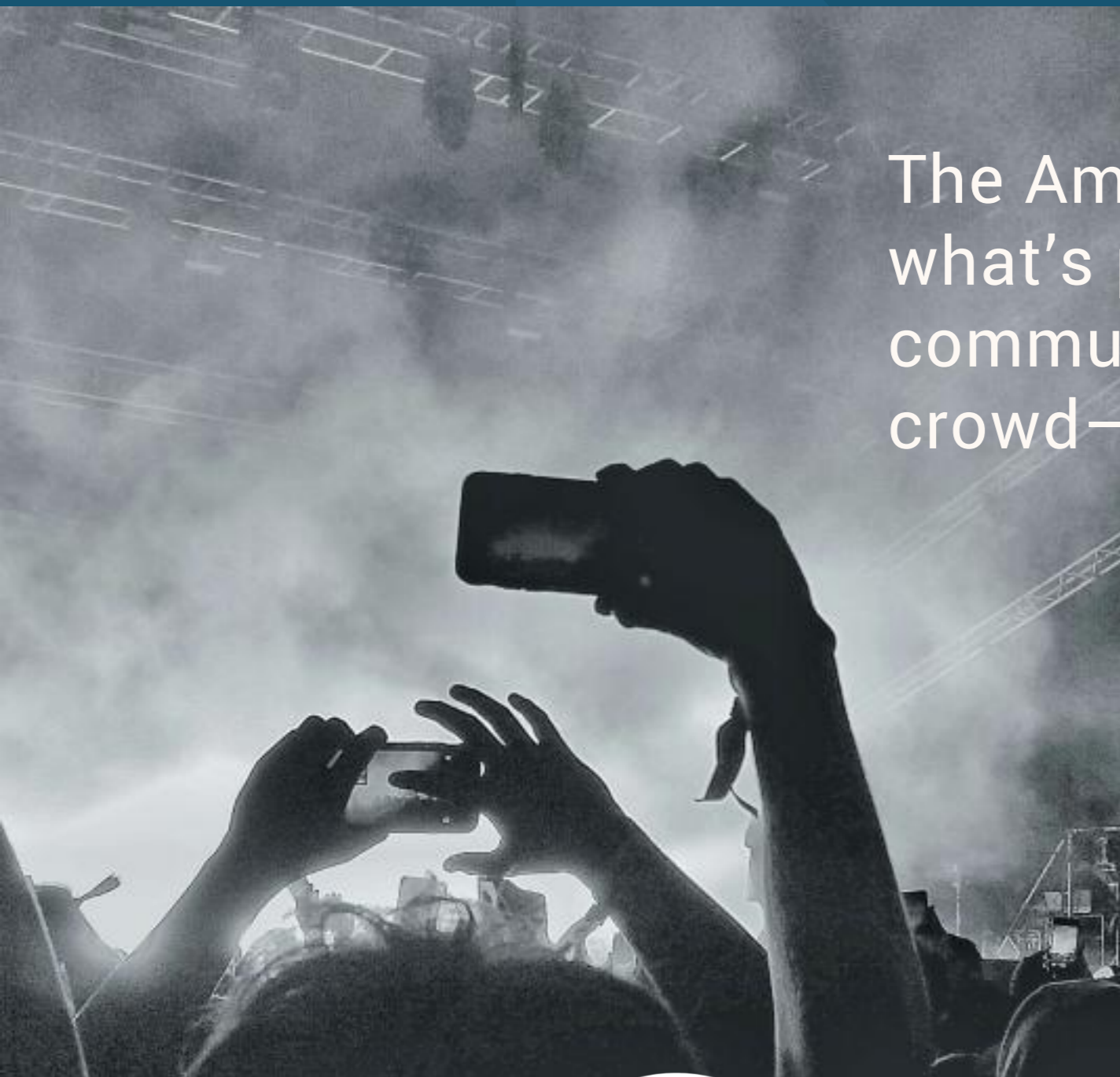
# WELCOME TO THE AMP

WHERE COMMUNITY, CULTURE, AND  
CONNECTION TAKE CENTER STAGE.

1680 NORTON ROAD, STOW

[THESTOWAMP.COM](http://THESTOWAMP.COM)





The Amp is about the people of Stow and what's possible when vision aligns with community. You're not just a face in the crowd—you're part of the narrative.



**THE AMP IS WHERE WE BUILD SOMETHING BIGGER, IN A SPACE WE FINALLY CALL OUR OWN.**

**Y. YOUR STAGE. YOUR  
AGE. YOUR STORY**

Stow's new outdoor performance venue—built for concerts, culture, and connection. It's more than a place to gather—it's a spark for local growth, a hub for civic pride, and a stage for what's next.



**100+** ANNUAL EVENTS +  
PERFORMANCES

---

**07**

**MILES OF CONNECTED  
TRAILS**

---

**2.5** ACRES OF COMMUNITY  
GREEN SPACE

---

**6K**

**POPULATION WITHIN  
WALKABLE DISTANCE**

---

**2K+** STAGE +  
LAWN SEATING

**240K** SQ. FT. OF ADJACENT  
RETAIL + DINING SPACES



# WHERE STOW COMES ALIVE ALL SEASON LONG.

- Seasonal concert series
- Headliner events with top-tier performers
- Opportunities for rising local talent
- Programming for enrichment & engagement
- Music
- Nature
- Community
- Fitness
- Arts
- Fun



**BIG NIGHTS.  
LOCAL ACTS.  
LASTING  
MEMORIES.**



# A BOOST FOR LOCAL LIVING.

- Revitalize retail opportunities
- Attract new restaurants & businesses
- Fuel vibrant economic growth—without raising taxes



**MORE THAN A STAGE—A SPARK FOR RESTAURANTS, SHOPS, AND NEW IDEAS.**

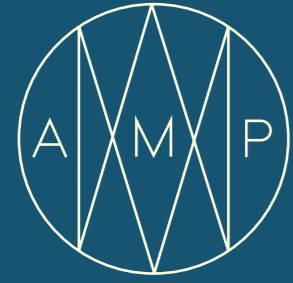


# A SMARTER CIVIC PARTNERSHIP.

- Strong public-private partnership
- Built for the community, by the community
- Design & construction underway

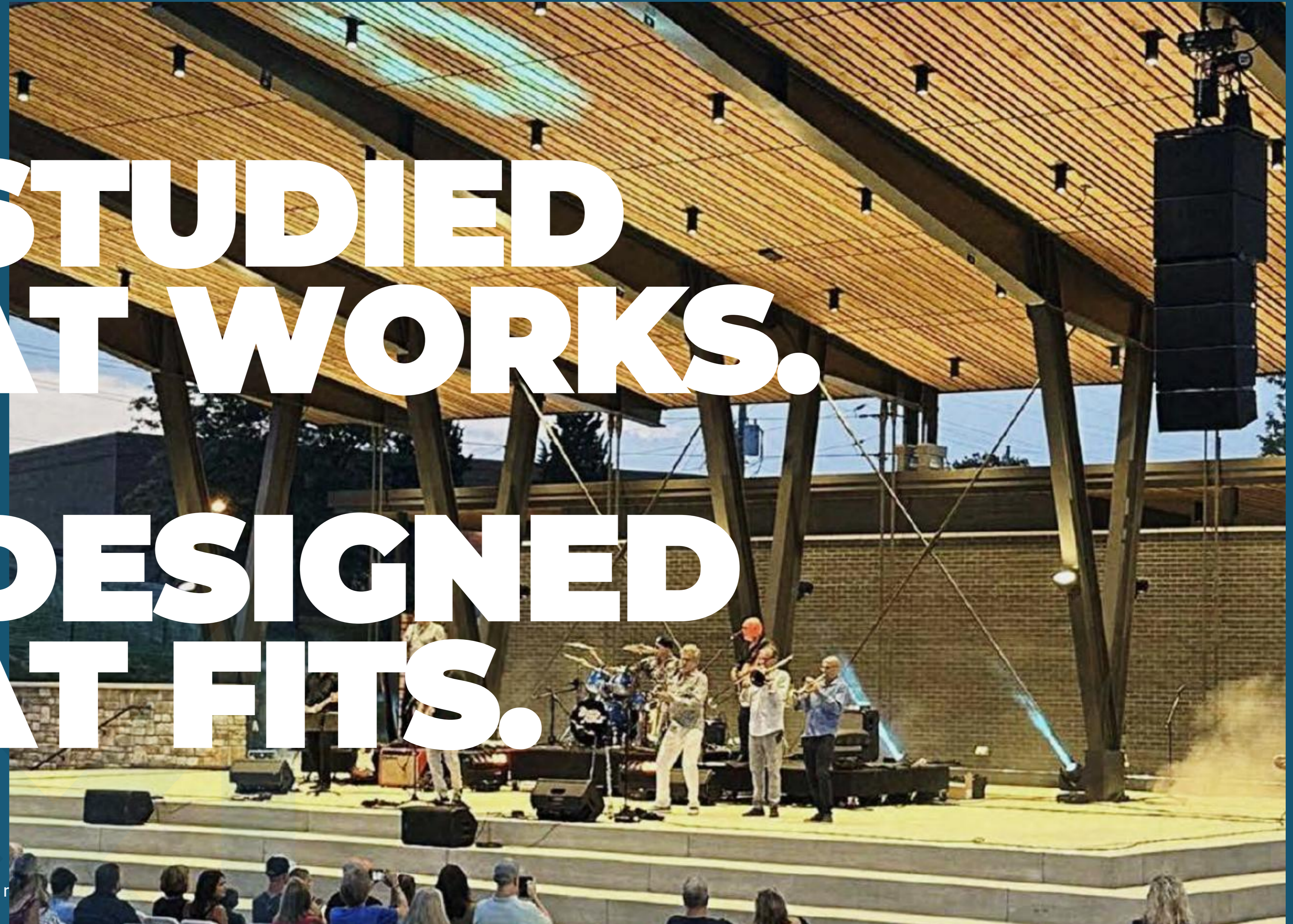
“This is more than a venue. It’s a symbol of what Stow can create when we come together.”

JOHN PRIBONIC  
Mayor, City of Stow

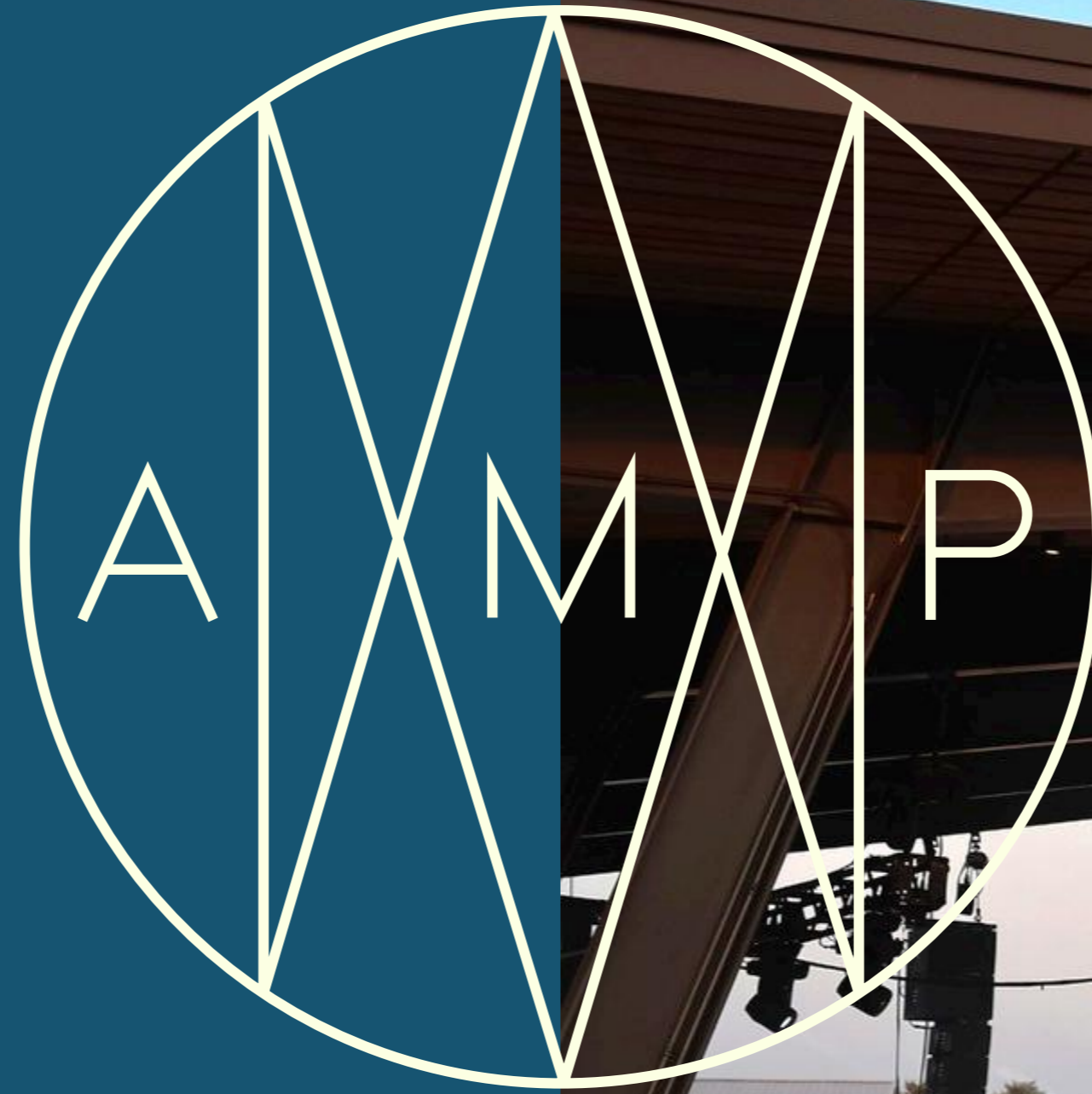


**WE STUDIED  
WHAT WORKS.**

**WE DESIGNED  
WHAT FITS.**



**INTRODUCING**



# **THE FUTURE OF STOW**



**NOT JUST A STAGE**

**A PLACE TO...**

**REMEMBER**

**GROW**

**BELONG**

**CREATE**

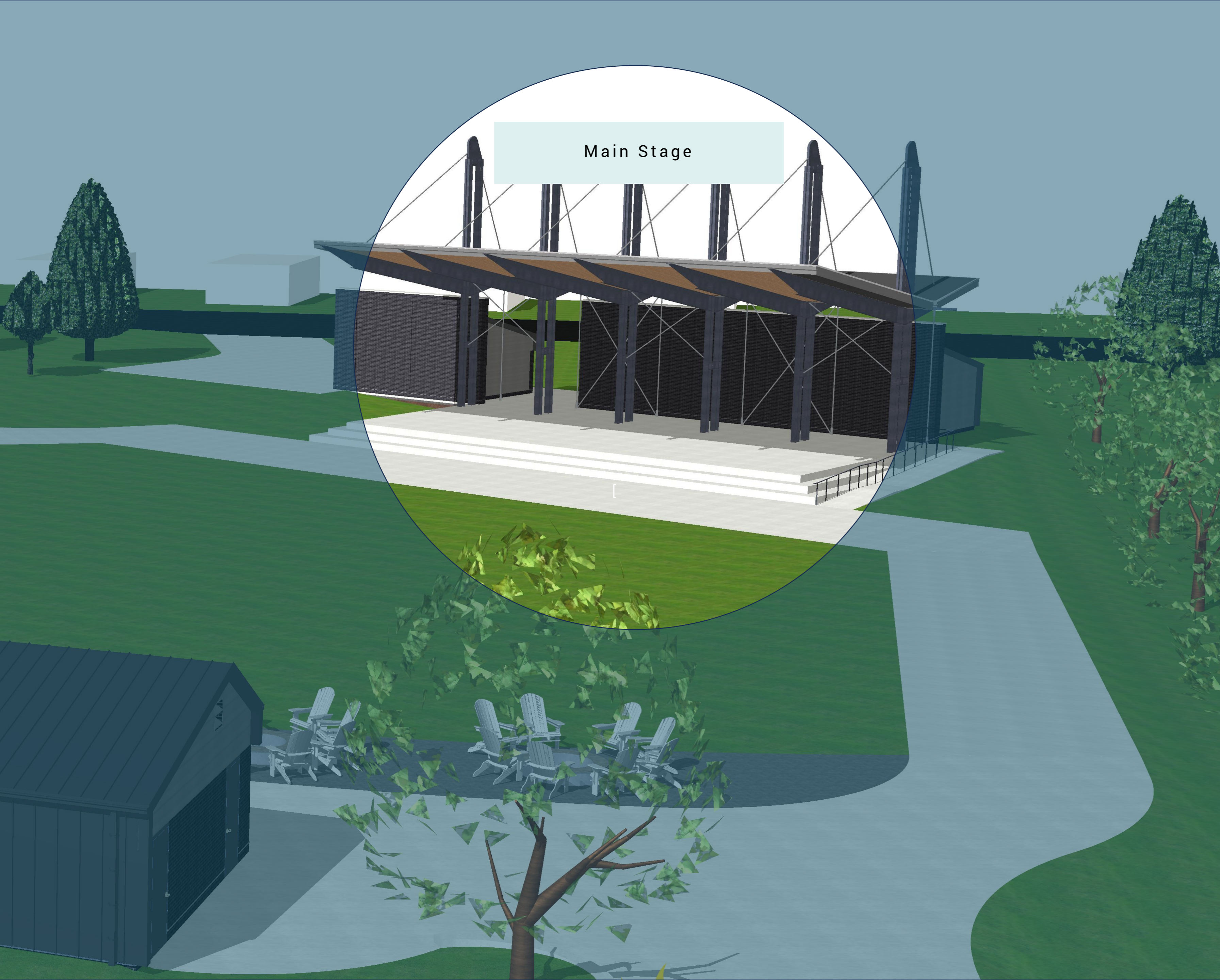
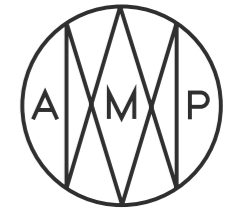
**INSPIRE**

**FEEL**





# MAIN STAGE

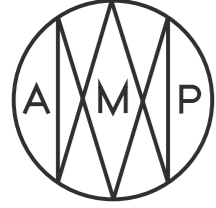


Main Stage

## PERFORMANCE-READY DESIGN

- **Permanent Covered Structure** – provides year-round protection for performers
- **Optimized for acoustics, sound, and professional lighting**
- **Spacious Stage - 70' x 30'** layout to accommodate a wide range of performances
- **Quality Construction** – steel frame with architectural wood-and-metal canopy for durability and style
- **Versatile Venue** – ideal for both local talent and large-scale performances

# SWING GARDEN



## CHARMING & COMFORTABLE


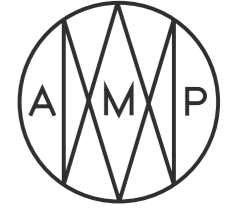
- A beautifully crafted pergola with swings suspended beneath
- Blending relaxation with architectural elegance
- A Place to Pause – Encourages guests to slow down, unwind, and enjoy the surroundings
- Garden Setting – Nestled in a serene, garden-like area adjacent to the amphitheater



Garden Swings



# SECOND STAGE

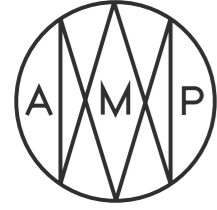


Second Stage

## INTIMATE PERFORMANCE SPACE

- A cozy setting designed for small-scale performances, readings, and interactive presentations
- Versatile Uses – Perfect for storytelling, educational talks, and unique experiences (imagine meeting zoo animals up close!)
- Up-Close Connection – Creates a personal, engaging atmosphere between performers and audience

# CONCESSIONS/ BIER GARDEN



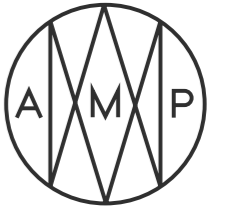
## SNACKS & REFRESHMENTS

- No need to pack a picnic! Our concession area offers a variety of delicious snacks and drinks to keep you energized throughout the show.
- More than just a place to grab a drink, it is a vibrant gathering spot for connection, conversation, and community. Featuring local craft brews alongside fan favorites, it adds a refreshing twist to your amphitheater experience.



Concessions/Bier Garden

# FIREPITS

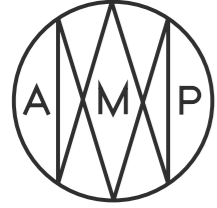


Firepits

## WARM & COZY AMBIENCE

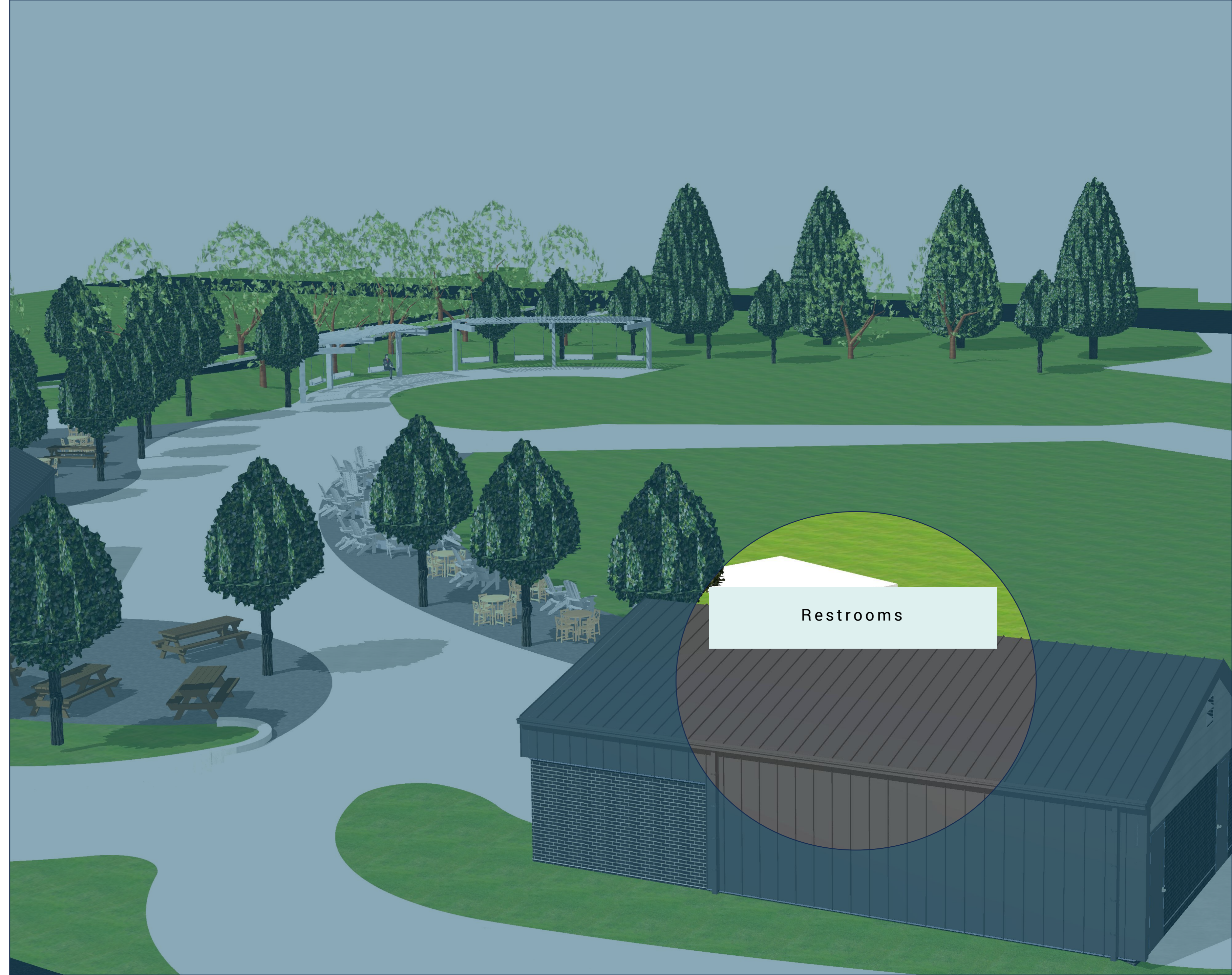
- Rentable during special events
- Seating for 6-8
- Timer controlled
- Gas Powered
- Creating social gathering zones
- Permanent built-in feature
- Providing warmth, fire pits make the amphitheater enjoyable in cooler evenings and during spring/fall, extending the entertainment season

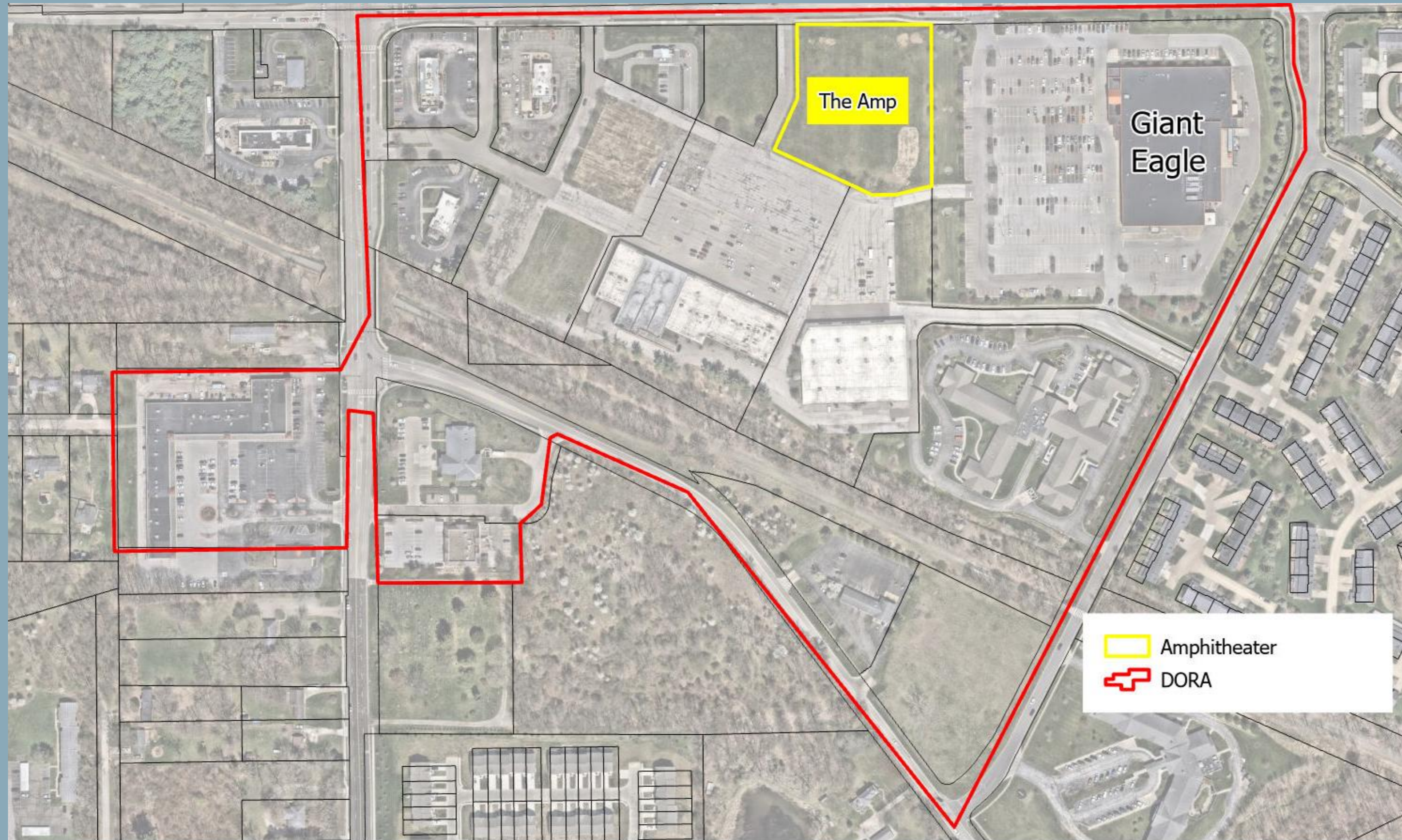
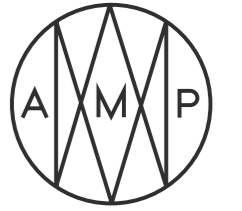
# RESTROOMS



## ACCESSIBLE FAMILY RESTROOMS

- Clean, modern facilities
- Designed for guest comfort
- Private, accessible spaces to meet the needs of families & caregivers
- Changing stations –  
Conveniently located for ease of accessibility

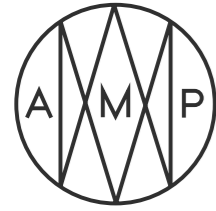




## DESIGNATED OUTDOOR REFRESHMENT AREA

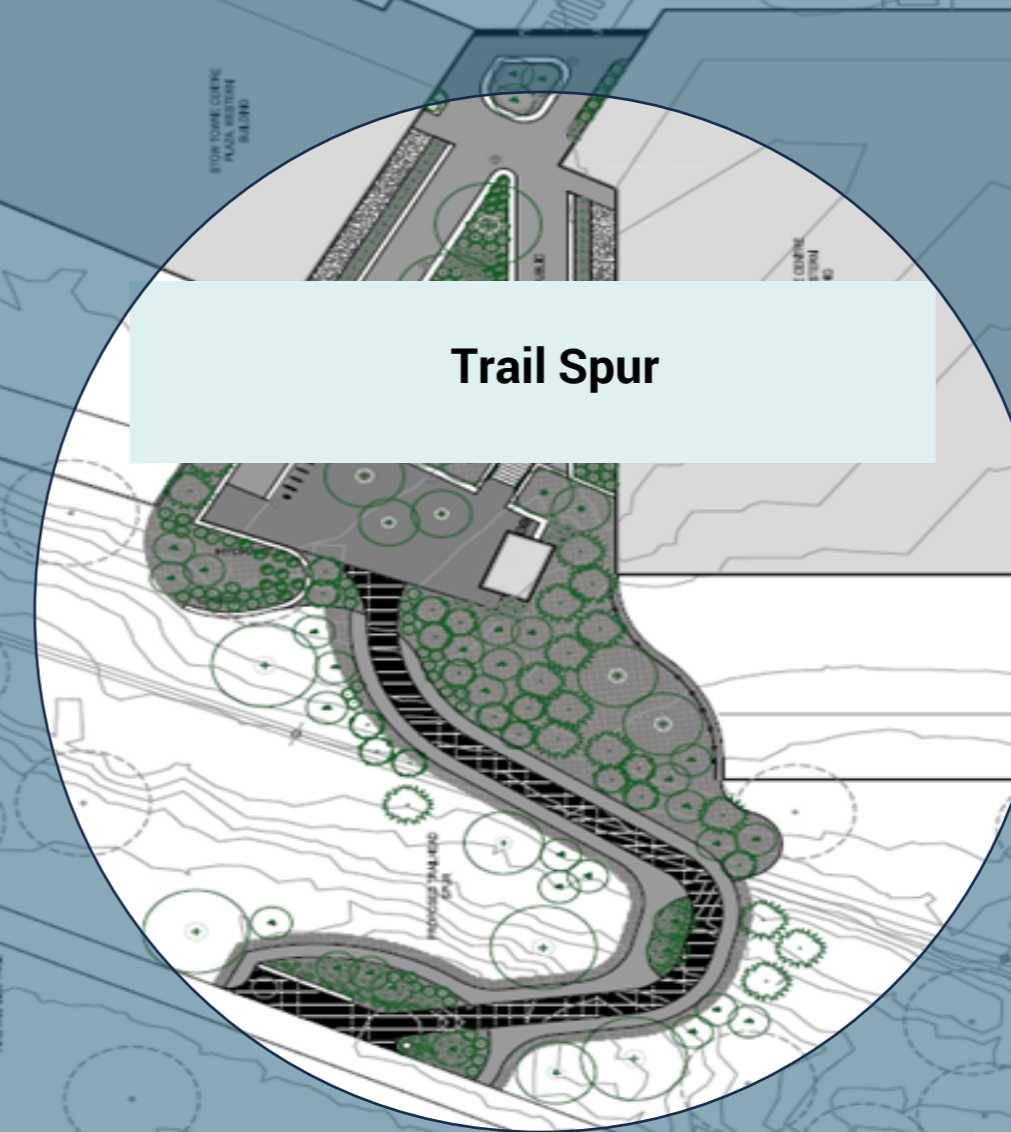
- Patrons may purchase alcoholic beverages in specially marked, logo branded plastic cups from participating businesses in the DORA zone (bars, restaurants, breweries, and the AMP concession, etc.)
- Patrons can walk around within the DORA boundaries with their drinks but cannot take them outside the DORA zone or bring in outside alcohol.
- Creates a vibrant local atmosphere to support local businesses, entertainment and tourism.

# TRAIL SPUR/ CONNECTOR

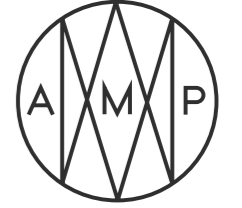


## HIKE & BIKE ACCESS

- **Improves Access:** Provides a direct, safe route for walkers, runners, and cyclists
- **Reduces Parking Strain:** Attendees may arrive by trail instead of car
- **Encourages Healthy Lifestyles:** Supports walking and biking
- **Builds Community Integration:** Links recreation, culture, and events into one experience
- **Expands Audience:** Trail users may discover The Amp and attend events
- **Sustainability:** Promotes eco-friendly, multi-modal transportation



# PUBLIC ART

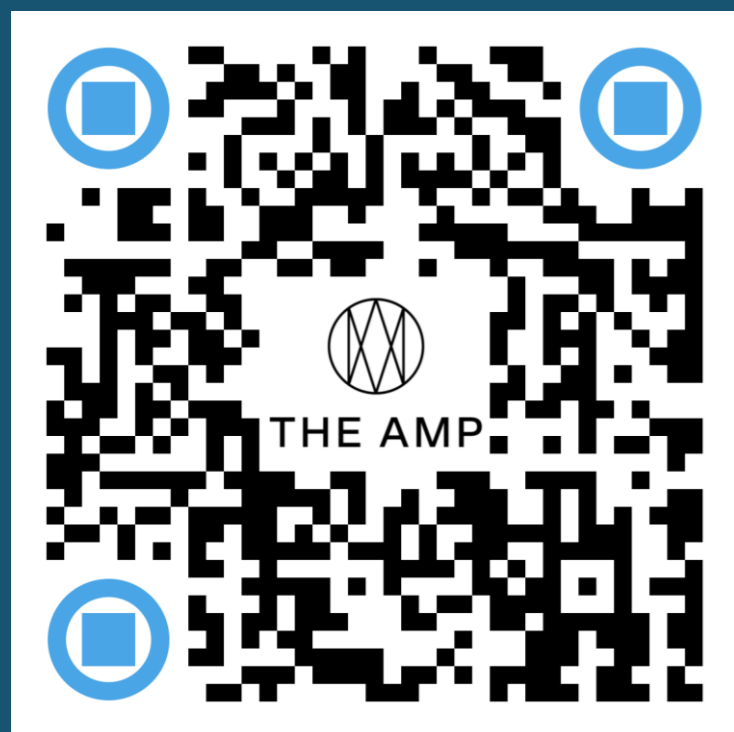


## CREATING A STRONGER SENSE OF PLACE

- Creates a signature identity for The Amp
- Engages local artists and community pride
- Provides Instagrammable/photo-worthy spots that boost community engagement
- Enhances aesthetic quality beyond just function



# MEET ME AT THE AMP



Expected Completion: Spring 2027



Development:

John Pribonic, Mayor

City of Stow

[John.Pribonic@stowohio.gov](mailto:John.Pribonic@stowohio.gov)

Management:

Nicholas Wren, Chief of Staff

City of Stow

[Nick.Wren@stowohio.gov](mailto:Nick.Wren@stowohio.gov)